



The ASA AAF3/AAF4 is a high precision focuser with a stepper motor and a high resolution magnetic absolute encoder. It measures the actual focuser position directly on the inner focuser tube. It also contains a temperature sensor located in the focuser cable. The motor controller electronics is included in the focuser.

The focuser has a USB interface and built-in WIFI (Software will be available later).

All the mechanical parts were adjusted at the factory. Do never disassemble the focuser as this voids your warranty.

Only use the included cables for operating the focuser. Using self-made cables voids your warranty.

If any problems occur, contact support@astrosysteme.at .

Content

Wiring	3
Software installation	4
Using ACC focuser software	5
Focus list Window.....	6
Connecting ACC to other programs via ASCOM.....	7

Wiring

- Connect the metal connector of your focuser cable to your AAF3/AAF4 focuser.
- Connect the USB cable to the black metal box on your focuser cable and connect the USB type A connector to a USB port of your computer.
- Connect the power supply to the DC connector on the black box. There is a 2m extension cord included if the power supply cable is not long enough for your demand.
- Choose the appropriate power socket adapter and put it into the tray of the power supply.
- Connect the power supply to a 110/220VAC power socket.



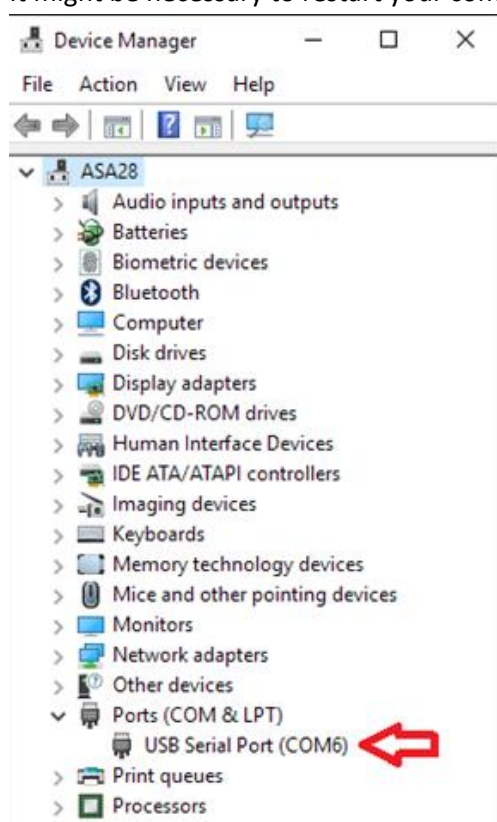
If you own an ASA DDM mount you can use the mount's internal wiring to avoid cables on the outside of the mount. Adaptercables for that are available at ASA. Contact sales@astrosysteme.at.

Do not modify the cables on your own. This would make your warranty invalid.

Software installation

A USB flash drive is included in your focuser packaging. It contains USB drivers, the ASCOM platform installer, ACC focuser software and this manual as pdf.

- Connect all the cables as described above
- Windows 10 can install the necessary driver for the internal FTDI USB converter automatically via Windows update when you connect the focuser's USB cable. If the driver installation does not work automatically please execute the file "CDM21218_Setup" on your USB flash drive. If the driver installation worked correctly, the focuser cable should be displayed in your Windows device manager in the section "Ports (COM & LPT)" as "USB Serial Port". (the COM number might differ)
It might be necessary to restart your computer after the driver installation.

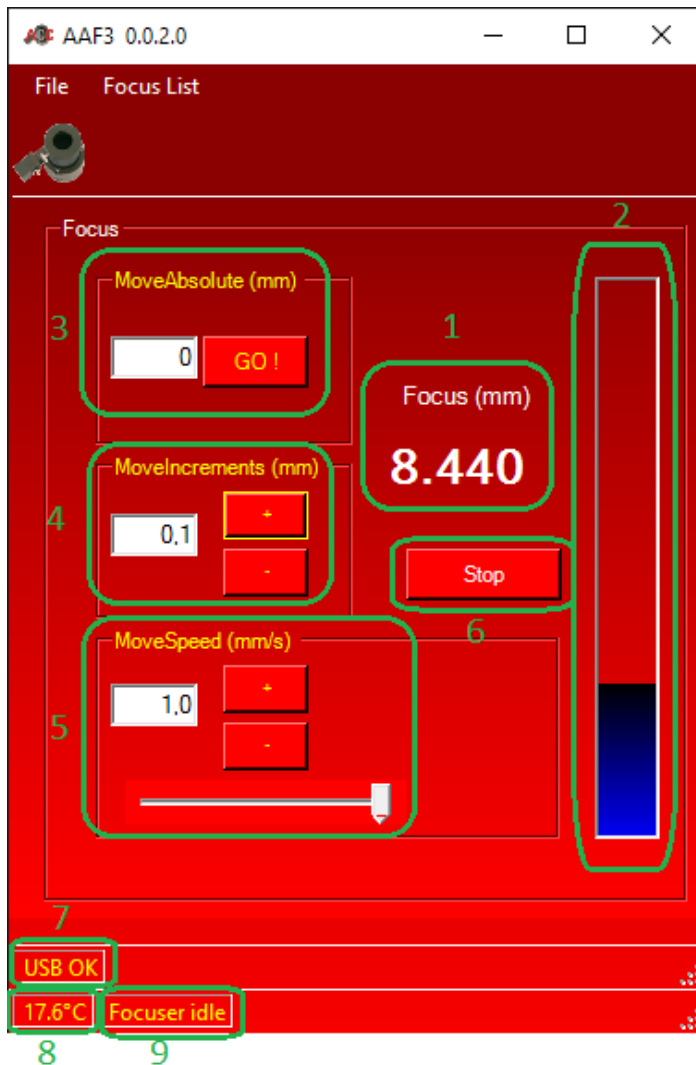


- If not already installed on your computer, install the ASCOM platform, by executing the file "ASCOMPlatformXX"
- Install ACC by executing the file "ACCInstallXX"
(if you have already installed an older version of ACC on your computer, uninstall it first)

Using ACC focuser software



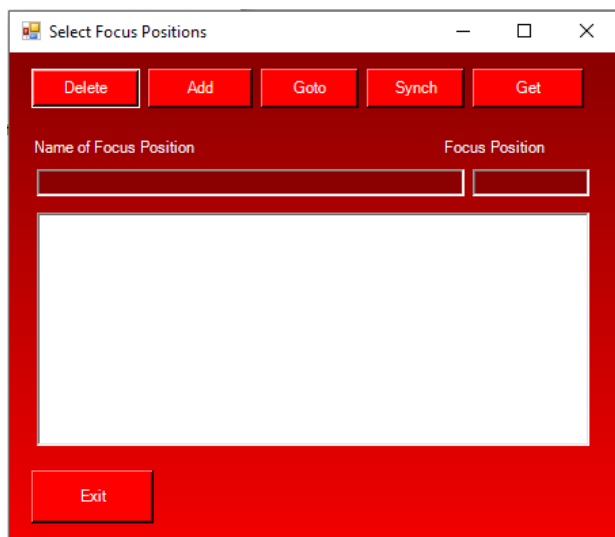
Start ACC by pressing the ACC desktop icon



1. Shows actual focuser position measured by absolute encoders
2. Visualization of focuser position
3. MoveAbsolute:
Enter the desired position into the text field and press "GO!". The focuser will move to this position.
4. MoveIncrements:
Enter the distance you want your focuser to move. Press "+" or "-" to start movement.
5. MoveSpeed
You can change the desired moving speed by actuating the slider bar. Start movement by pressing and holding "+" or "-"
6. Press "Stop" to stop the current movement
7. Connection status. If it shows "Device error" check all the cable connections.
8. Shows temperature. The sensor is located in the black box of the focuser cable.
9. Focuser status

If the focuser is forced to move in any direction, it compensates this undesired movement automatically.

Focus list Window



Here you can save various focus positions.

- Enter the name of the position into the text field.
- Enter the focus position into the text field or load the current position by pressing “Get”.
- Press “Add” to save the position to your focus list.

You can move your focuser to certain positions by choosing a position from your focus list and press “Goto”.

Connecting ACC to other programs via ASCOM

If you want to use third party software like FocusMax, MaximDL or others for focusing, you need to select “ASA ACC Focuser” in the ASCOM Focuser Chooser of your software.

